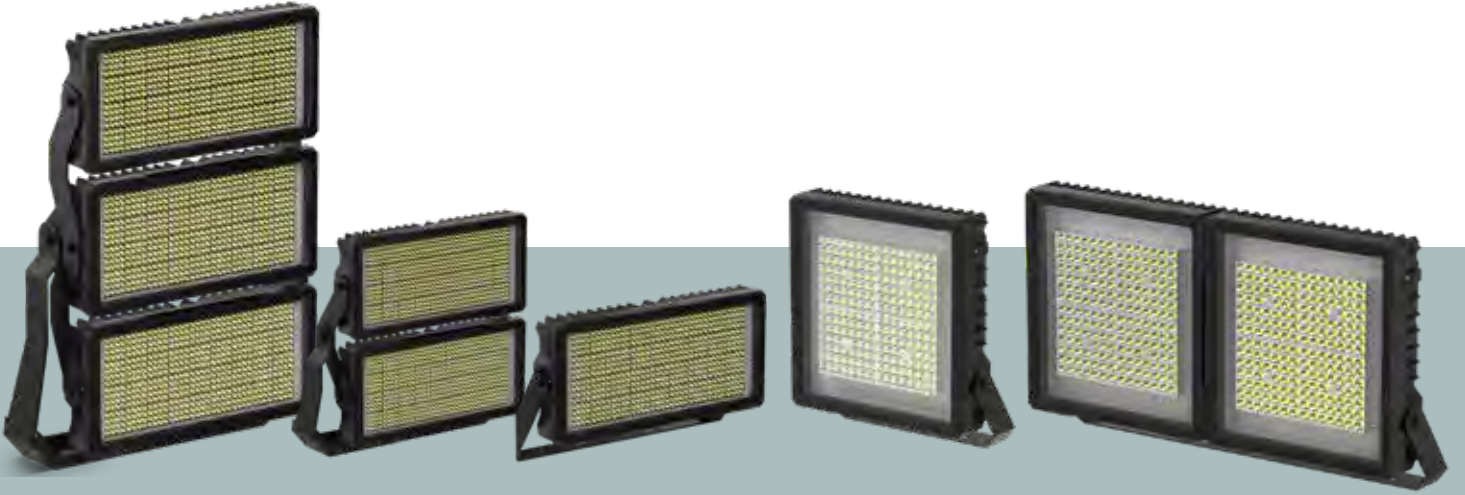


detay
LIGHTING

FLOODLIGHT SERIES

TOKYO



Tokyo, one of the important series of our projector group, offers powerful and long-lasting lighting service in all football fields, factories and large outdoor spaces.

Combining powerful Led technology and design in a single product, Tokyo is safely preferred for many years in all your outdoor projector projects with its different power options and size options.

TOKYO I



3030 MID POWER LED
 100.000 hours LED lifetime according to LM-80 and TM-21 report.
 Reliable EMC type package.
 Highlumen maintenance



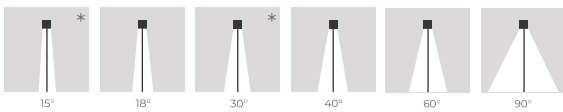
3535 HIGH POWER LED
 100.000 hours LED lifetime according to LM-80 and TM-21 report.
 Reliable ceramic type package.
 High lumen maintenance.



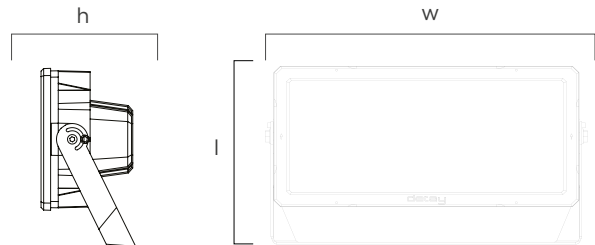
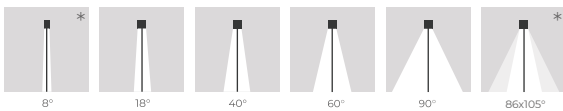
RAL CODES

Standard	Optional	Optional
RAL 9005	RAL 9016	RAL 9022

SYMMETRIC



SYMMETRIC / ASYMMETRIC



Product Code	Power	Lumen	Color Temperature	Dimensions l w h (mm)	Weight	Carton Pieces	Outer Box (mm)	Outer Box Weight
DTY.013	240W	31200	3000-4000-6500K	280x507x150	8,3 kg	3	540x266x540	26,5 kg
	320W	41600	3000-4000-6500K	280x507x150	8,5 kg	3	540x266x540	27 kg
	240W*	28800	3000-4000-6500K	280x507x150	8,3 kg	3	540x266x540	26,5 kg
	320W*	38400	3000-4000-6500K	280x507x150	8,5 kg	3	540x266x540	27 kg
	400W	52000	3000-4000-6500K	332x554x215	12 kg	3	580x300x580	37 kg
	500W	65000	3000-4000-6500K	332x554x215	12,5 kg	3	580x300x580	38,5 kg
	400W*	48000	3000-4000-6500K	332x554x215	12 kg	3	580x300x580	37 kg
	500W*	60000	3000-4000-6500K	332x554x215	12,5 kg	3	580x300x580	38,5 kg



3030 MID POWER LED
100.000 hours LED lifetime
according to LM-80 and TM-21 report.
Reliable EMC type package.
High lumen maintenance



3535 HIGH POWER LED
100.000 hours LED lifetime
according to LM-80 and TM-21 report.
Reliable ceramic type package.
High lumen maintenance.



BODY

Aluminium injection body, electrostatic powder coated,
4mm tempered glass, ventilation plug.

LENS

Resistant to UV rays, 93% optically efficient PMMA
material lens or *PC reflector with aluminium reflective
coating.

DRIVER

Constant current output, With 90% efficiency, Effective
power factor regulation that is not affected by fluctuations
in grid voltage, dimmable-programmable ENEC certificated
IP67 Driver.

PCB

Aluminum PCB, Aluminum Base Layer / Thickness: 1L /
1.6mm.
Copper Thickness: 1 OZ,HASL surface coating.

OPTIONS

SPD, IP68 Connector.



Tokyo, one of the important series of our projector group, offers powerful and long-lasting lighting service in all football fields, factories and large outdoor spaces.

TOKYO II



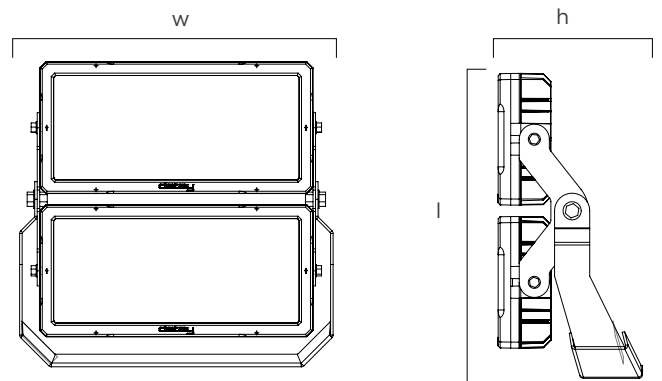
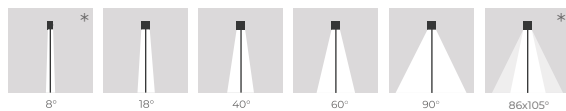
3030 MID POWER LED
 100.000 hours LED lifetime according to LM-80 and TM-21 report.
 Reliable EMC type package.
 High lumen maintenance.



RAL CODES

Standard	Optional	Optional
RAL 9005	RAL 9016	RAL 9022

SYMMETRIC / ASYMMETRIC



Product Code	Power	Lumen	Color Temperature	Dimensions l w h (mm)	Weight	Carton Pieces	Outer Box (mm)	Outer Box Weight
DTY.013	800W	104000	3000-4000-6500K	607x554x285	24 kg	1	630x560x300	25 kg
	1000W	130000	3000-4000-6500K	607x554x285	25 kg	1	630x560x300	26 kg
	800W*	96000	3000-4000-6500K	607x554x285	24 kg	1	630x560x300	25 kg
	1000W*	120000	3000-4000-6500K	607x554x285	25 kg	1	630x560x300	26 kg



3535 HIGH POWER LED

100.000 hours LED lifetime according to LM-80 and TM-21 report.
Reliable ceramic type package.
High lumen maintenance.



BODY

Aluminium injection body, electrostatic powder coated, 4mm tempered glass, ventilation plug.

LENS

Resistant to UV rays, 93% optically efficient PMMA material lens or *PC reflector with aluminium reflective coating.

DRIVER

Constant current output, With 90% efficiency, Effective power factor regulation that is not affected by fluctuations in grid voltage, dimmable-programmable ENEC certificated IP67 Driver.

PCB

Aluminum PCB, Aluminum Base Layer / Thickness: 1L / 1.6mm.
Copper Thickness: 1 OZ,HASL surface coating.

OPTIONS

SPD, IP68 Connector.



Tokyo, one of the important series of our projector group, offers powerful and long-lasting lighting service in all football fields, factories and large outdoor spaces.

TOKYO III



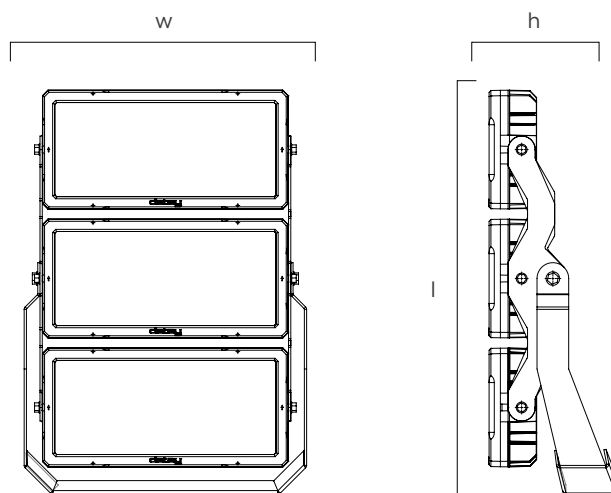
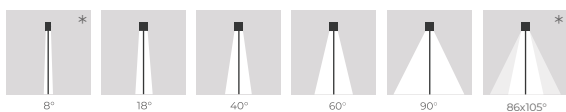
3030 MID POWER LED
 100.000 hours LED lifetime
 according to LM-80 and TM-21 report.
 Reliable EMC type package.
 Highlumen maintenance.



RAL CODES

Standard	Optional	Optional
RAL 9005	RAL 9016	RAL 9022

SYMMETRIC / ASYMMETRIC



Product Code	Power	Lumen	Color Temperature	Dimensions l w h (mm)	Weight	Carton Pieces	Outer Box (mm)	Outer Box Weight
DTY.013	1200W	156000	3000-4000-6500K	892x554x285	36 kg	1	920x560x300	37 kg
	1500W	195000	3000-4000-6500K	892x554x285	38 kg	1	920x560x300	39 kg
	1200W*	144000	3000-4000-6500K	892x554x285	36 kg	1	920x560x300	37 kg
	1500W*	180000	3000-4000-6500K	892x554x285	38 kg	1	920x560x300	39 kg



3030 HIGH POWER LED
100.000 hours LED lifetime
according to LM-80 and TM-21 report.
Reliable ceramic type package.
High lumen maintenance.



BODY

Aluminium injection body, electrostatic powder coated, 4mm tempered glass, ventilation plug.

LENS

Resistant to UV rays, 93% optically efficient PMMA material lens or *PC reflector with aluminium reflective coating.

DRIVER

Constant current output, With 90% efficiency, Effective power factor regulation that is not affected by fluctuations in grid voltage, dimmable-programmable ENEC certified IP67 Driver.

PCB

Aluminum PCB, Aluminum Base Layer / Thickness: 1L / 1.6mm.
Copper Thickness: 1 OZ,HASL surface coating.

OPTIONS

SPD, IP68 Connector.



Tokyo, one of the important series of our projector group, offers powerful and long-lasting lighting service in all football fields, factories and large outdoor spaces.



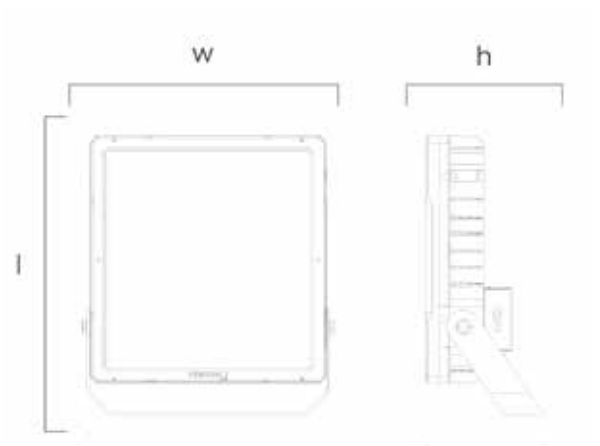
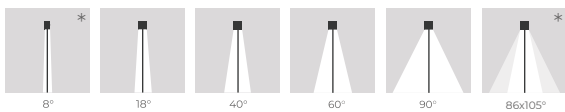
3535 MID POWER LED
 100.000 hours LED lifetime
 according to LM-80 and TM-21 report.
 Reliable ceramic type package.
 High lumen maintenance.



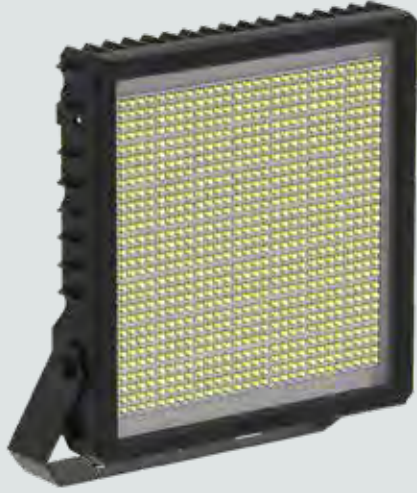
RAL CODES

Standard	Optional	Optional
RAL 9005	RAL 9016	RAL 9022

SYMMETRIC / ASYMMETRIC



Product Code	Power	Lumen	Color Temperature	Dimensions l w h (mm)	Weight	Carton Pieces	Outer Box (mm)	Outer Box Weight
DTY.013	1200W	156000	3000-4000-6500K	892x554x285	36 kg	1	920x560x300	37 kg
	1500W	195000	3000-4000-6500K	892x554x285	38 kg	1	920x560x300	39 kg
	1200W*	144000	3000-4000-6500K	892x554x285	36 kg	1	920x560x300	37 kg
	1500W*	180000	3000-4000-6500K	892x554x285	38 kg	1	920x560x300	39 kg



3535 HIGH POWER LED
100.000 hours LED lifetime
according to LM-80 and TM-21 report.
Reliable EMC type package.
High lumen maintenance.



BODY

Aluminium injection body, electrostatic powder coated,
4mm tempered glass, ventilation plug.

LENS

Resistant to UV rays, 93% optically efficient PMMA material
lens or *PC reflector with aluminium reflective coating..

DRIVER

Constant current output, With 90% efficiency, Effective
power factor regulation that is not affected by fluctuations
in grid voltage, dimmable-programmable ENEC certified
IP67 Driver.

PCB

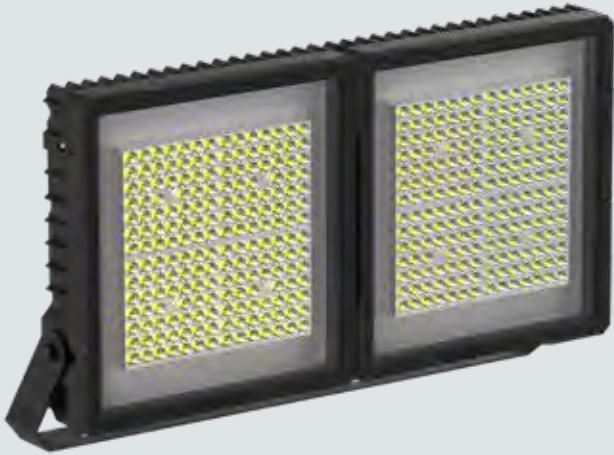
Aluminum PCB, Aluminum Base Layer / Thickness: 1L /
1.6mm.
Copper Thickness: 1 OZ,HASL surface coating.

OPTIONS

SPD, IP68 Connector.



Our new 600W design in our ENEC certified Tokyo floodlight series is safely preferred in many of your lighting projects with its monolithic structure, reflector and optical lens options, and provides uninterrupted service for many years.



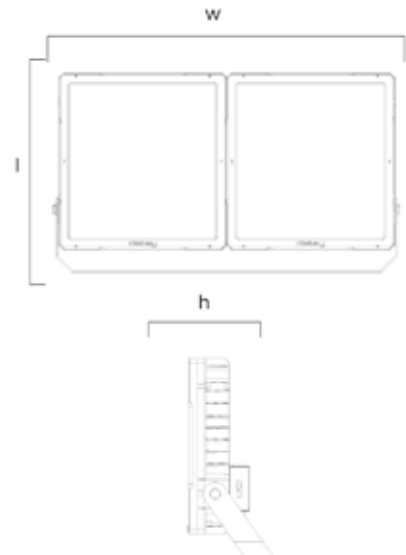
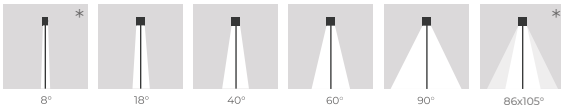
3030 HIGH POWER LED
 100.000 hours LED lifetime
 according to LM-80 and TM-21 report.
 Reliable ceramic type package.
 High lumen maintenance.



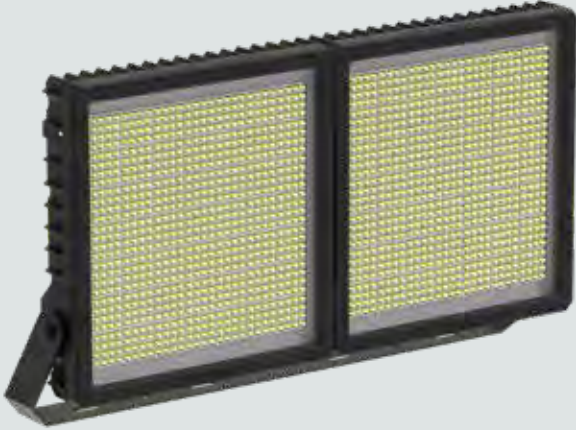
RAL CODES

Standard	Optional	Optional
RAL 9005	RAL 9016	RAL 9022

SYMMETRIC / ASYMMETRIC



Product Code	Power	Lumen	Color Temperature	Dimensions l w h (mm)	Weight	Carton Pieces	Outer Box (mm)	Outer Box Weight
DTY.013	1200W	156000	3000-4000-6500K	892x554x285	36 kg	1	920x560x300	37 kg
	1500W	195000	3000-4000-6500K	892x554x285	38 kg	1	920x560x300	39 kg
	1200W*	144000	3000-4000-6500K	892x554x285	36 kg	1	920x560x300	37 kg
	1500W*	180000	3000-4000-6500K	892x554x285	38 kg	1	920x560x300	39 kg



3030 MID POWER LED
100.000 hours LED lifetime according
to LM-80 and TM-21 report.
Reliable EMC type package.
High lumen maintenance



BODY

Aluminium injection body, electrostatic powder coated,
4mm tempered glass, ventilation plug.

LENS

Resistant to UV rays, 93% optically efficient PMMA material
lens or *PC reflector with aluminium reflective coating.

DRIVER

Constant current output, With 90% efficiency, Effective
power factor regulation that is not affected by fluctuations
in grid voltage, dimmable-programmable ENEC certified
IP67 Driver.

PCB

Aluminum PCB, Aluminum Base Layer / Thickness: 1L /
1.6mm.
Copper Thickness: 1 OZ,HASL surface coating.

OPTIONS

SPD, IP68 Connector.



Our new 600W design in our ENEC certified Tokyo floodlight series is safely preferred in many of
your lighting projects with its monolithic structure, reflector and optical lens options,
and provides uninterrupted service for many years.

PREFERENCES



Ataköy Indoor Athletics Hall - 200 Watt Tokyo floodlight was used in the hall. A high-intensity light source was provided at the end of the project. Tokyo floodlight series, which stands out in its group with its energy saving and high light efficiency, also offers low cost and quality service.



Antalya Gymnastics Sports Hall - Detail Lighting brand Tokyo floodlight series was used in our Antalya Gymnastics Sports Hall project, one of the largest sports halls in Antalya, with an area of 10,000 square meters and a capacity of 2500 people.



Mardin Castle - We have illuminated the Mardin Castle so that the historical Mardin Castle, which is among the most important cultural assets of Turkey, can be seen from everywhere and contribute to tourism! Energy efficient 640 Watt Tokyo floodlight were used in and around the castle.



Halit Kivanç City Stadium Project - We have completed our lighting project at Halit Kivanç City Stadium in Gaziosmanpaşa. Within the scope of the project prepared in accordance with FIFA standards, a 640 Watt Tokyo floodlight was used in the stadium.

detay
LIGHTING



www.detayaydinlatma.com.tr

Emek Mahallesi, Sırdaş Sokak
No: 27/1 Sancaktepe, İstanbul/Türkiye

+90 216 602 11 41
info@detayaydinlatma.com.tr

